



21/11 Williams Parade Dulwich Hill, NSW



2



1



1

SOLD - Ideally located with a great outlook

Modern, vibrantly light and wonderfully private is this 2 bedroom apartment situated on the first floor of the popular Dulwich Park Estate. Positioned a mere stroll to Arlington light rail, CBD buses, parkland and shops with restaurants and cafes.

Boasting executive living with resort style facilities it is perfect for those wanting an effortless lifestyle. An open plan design features a combined living and dining which flows through the sliding doors to a large entertainer's terrace with a peaceful green outlook across the park which also allows for lots of natural light and supreme privacy.

The spacious fully equipped kitchen offers granite bench tops and quality appliances while the main bedroom boasts a walk in robe. Additional features include a single lock up garage, internal laundry, high ceilings, intercom and soft neutral tones throughout.

User friendly internal space with a clever design, this home is ideal as a permanent residence or strong investment opportunity. Be quick to inspect this property!

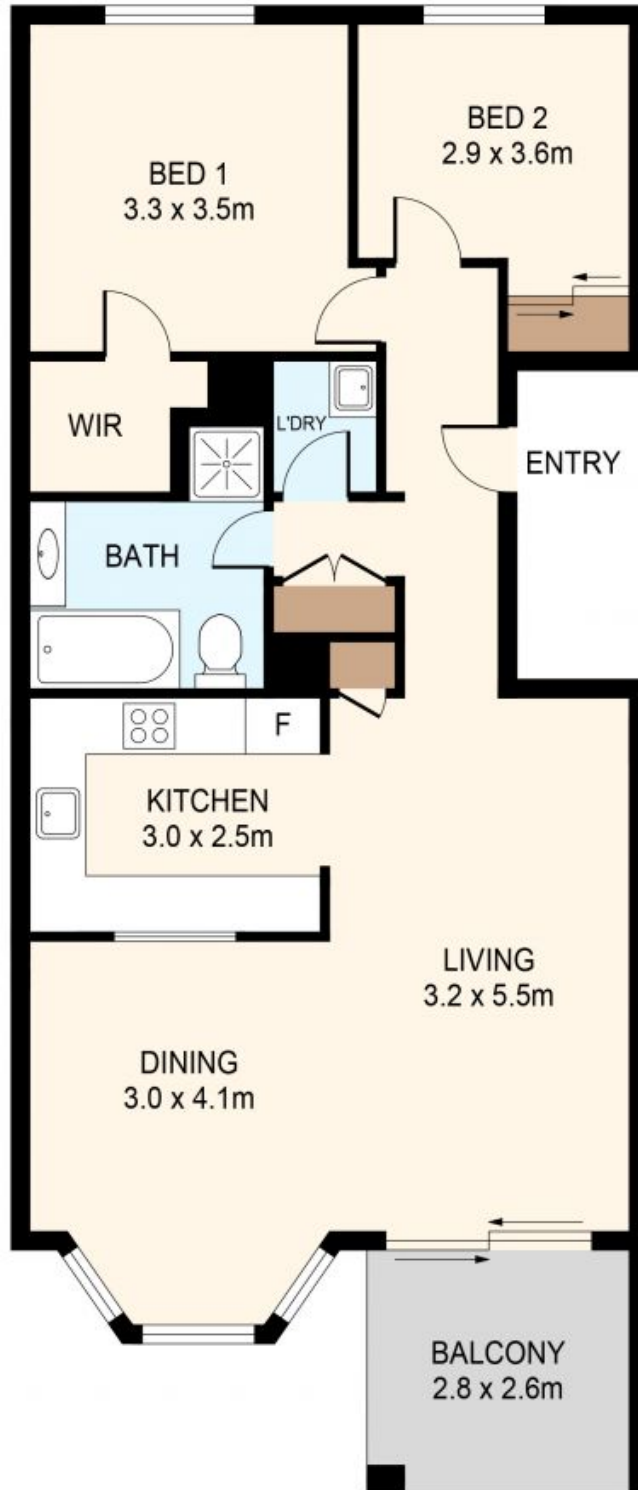
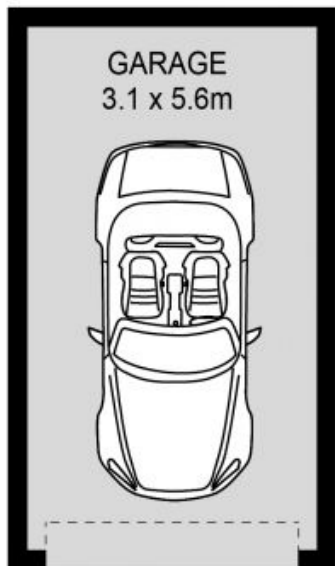
- Large & secure two bed apartment in Dulwich Park Estate
- Spacious living area flows out to large entertainer's terrace
- Peaceful park views, quality fixtures and fittings throughout
- 1st Floor position, single lock-up garage, resort style facilities
- Mere stroll to Arlington Light Rail, buses, parks, shops & cafes

Price: SOLD | Time Realty
Council Rates: \$316.00 p/q
Water Rates: \$179.00 p/q
Strata Rates: \$1,006.50 p/q

Adam Scappatura **Frank Settineri**

0413 355 481

0414 889 319



21/11 Williams Parade
DULWICH HILL

EST. 1979
time

PLANS SHOWN ONLY INDICATIVE OF LAYOUT. DIMENSIONS ARE APPROXIMATE.