



5/17A Walton Crescent Abbotsford, NSW



3



2



2

SOLD - An Exceptional Family Home

Well it is not very often that a 3 bedroom Townhouse quite like this one is on offer to purchase. With impressive spacious interiors throughout, this large family home (302 sqm total approx.) is at the rear of a boutique complex of only 5 and has all the easy living lifestyle comforts you deserve.

Abbotsford is a highly sought after premier locale close to all amenities so, being situated within close proximity to village shops, highly reputable local schools, cafes, restaurants, waterfront parklands, city buses & suburban buses, the River Cat plus the ever popular Sydney Rowing Club presents added value.

Featured are 3 huge double bedrooms with cathedral ceilings and built-ins. The main has an ensuite & access to a generous balcony with a private leafy outlook.

Enter to a bright, spacious oversized living area which leads/flows through floor to ceiling glass doors to a huge, 106sqm (approx.), manicured, easy care, private wrap-around outside living & entertaining area.

Includes a gourmet polyurethane, Caesar stone, stainless steel gas kitchen with dishwasher & breakfast bar. There's qua...

- 3 Bed, B/ins, main bed has ensuite & balcony access, 302sqm approx
- Impressive spacious interiors, Italian tiles & polished timber flooring
- Gourmet stainless steel kitchen, dishwasher, b/bar, study/utility room
- Easy care, 106 sqm approx. private outside living & entertaining area
- Double auto L/U Garage with storage & internal access, Pet-Friendly

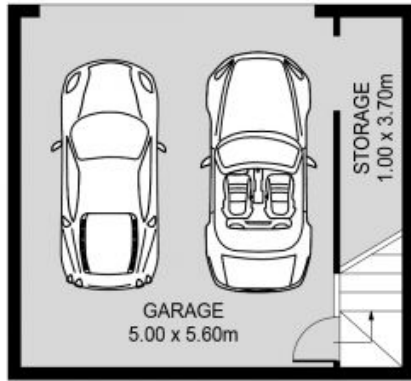
Price: SOLD | Time Realty
Council Rates: \$277.00 p/q
Water Rates: \$172.00 p/q
Strata Rates: \$1,241.50 p/q

Jim Piper

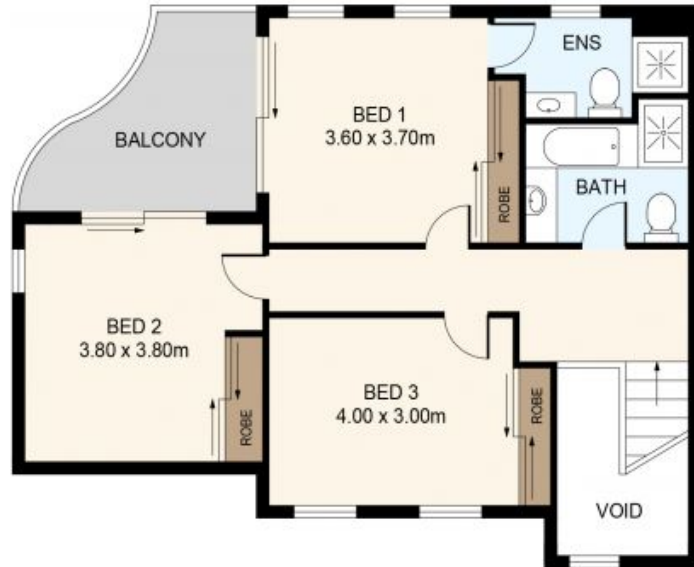
0417 018 161

Time Realty

9712 1188



LOWER LEVEL



LEVEL ONE



GROUND LEVEL



5-17A Walton Cres
ABBOTSFORD

EST. 1979
time

PLANS SHOWN ONLY INDICATIVE OF LAYOUT. DIMENSIONS ARE APPROXIMATE.