



1002/11 Australia Avenue Sydney Olympic Park, NSW

 2
  2
  1

SOLD BY LAMBROS MARKESSINIS - One of the Best views in Olympic park

EXECUTIVE APARTMENT with panoramic view from huge terrace overlooking Sydney Olympic parkland and blue mountain skyline.

This North Facing well establish and prestigious apartment is located in the heart of Sydney Olympic Park, just steps away from train station, world class sporting events, venues, restaurants and parklands.

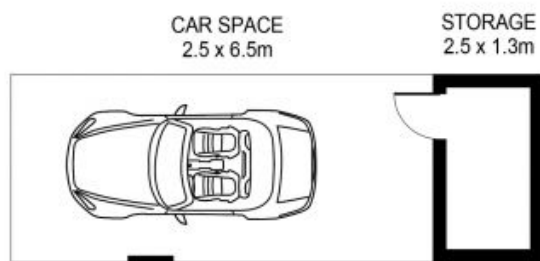
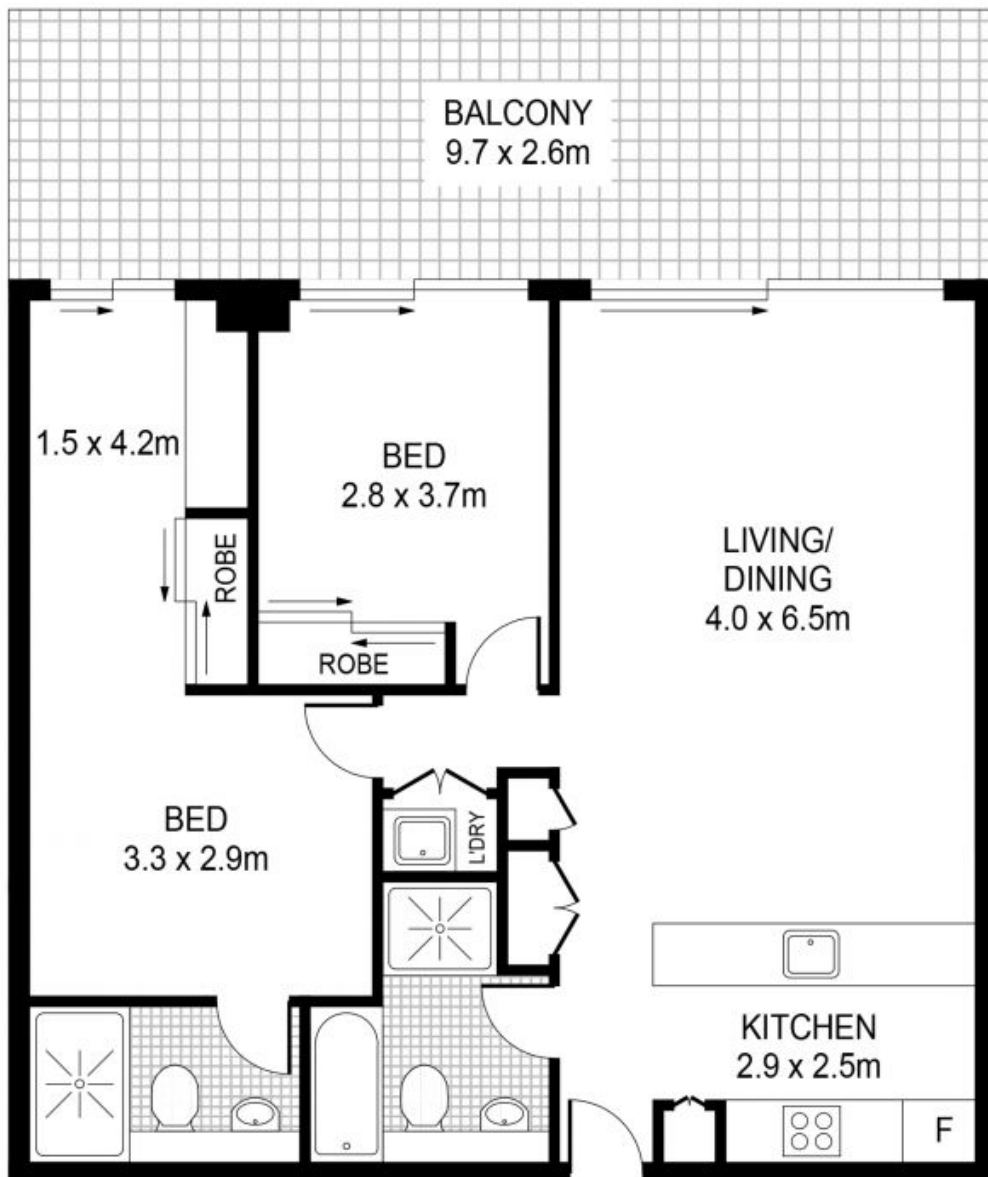
- High ceiling large open plan living/dining area with wall-to-wall windows
- Generous Master bedroom with ensuite and all bedrooms with built-ins
- Floor to ceiling windows in both bedrooms with views to blue mountain skyline
- Gourmet European kitchen with stainless steel Miele & Ilve appliances, ducted range hood, Caesar stone benchtops and polyurethane cabinetry
- Individual study space with fantastic view
- Double glaze windows offering peace and tranquillity plus low electricity bills
- Luxury and spacious designed bathrooms to fulfill your family needs
- Split system air-conditioning throughout

Price: SOLD BY LAMBROS MARKESSINIS
Council Rates: \$260.00 p/q
Water Rates: \$179.00 p/q
Strata Rates: \$1,388.72 p/q

Lambros MarkessinTime Realty

0407 788 777

9712 1188



1002/ 11 Australia Avenue
 SYDNEY OLYMPIC PARK

EST. 1979
time

PLANS SHOWN ONLY INDICATIVE OF LAYOUT. DIMENSIONS ARE APPROXIMATE.