



82 Russell Street Russell Lea, NSW



4



2



2

## SOLD - A Prized Location First Time Offered!

Built by the family in the early 1920's, this character double fronted 4 bedroom Californian Bungalow is set on a 695.6 sqm approx. level portion of land with a 2 street access. It is an exceptional opportunity because there are various options for such a home. Demolish and build your new dream home, renovate and extend (STCA).

A short walk takes you to city and suburban buses. All amenities are close by such as local schools, child care, gymnasiums, cafes, restaurants, local clubs, Five Dock and Top Drummoyne shopping centres.

Currently the home comprises of 4 double bedrooms, separate lounge and dining, a modern gas kitchen with dishwasher, a tidy bathroom with a 2nd bathroom in the laundry. There is a wide side driveway, a lock up garage plus rear street access which presents added value.

Completing the picture is your north facing low maintenance rear yard which includes a sparkling in ground pool. Lovely original features include 2 fireplaces with mantles, high patterned ceilings, picture rails, skirting boards, floorboards beneath the carpet.

Abbotsford, Wareemba Village shops an...

- Impressive 695.6 sqm (approx.) level portion of land, 2 street access
- Lovely original features, 4 beds, 2 bath, separate lounge and dining
- Gas kitchen, dishwasher, sparkling I.G pool, north facing rear yard
- Great opportunity to either renovate, extend or build new (STCA)
- An exceptional opportunity and a rare find in such a prized location!

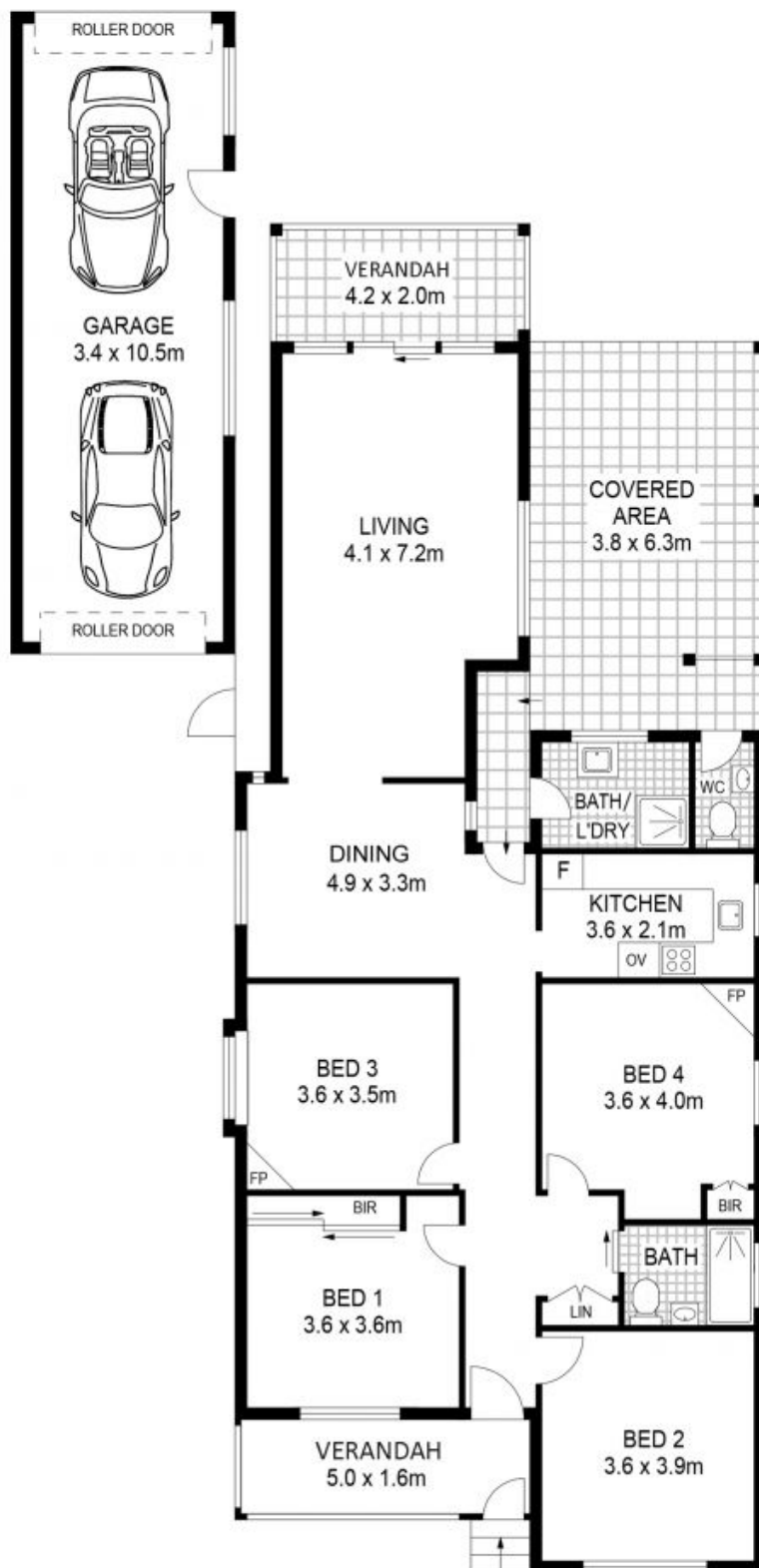
**Price:** SOLD | Time Realty  
**Council Rates:** \$486.00 p/q  
**Water Rates:** \$148.00 p/q

**Jim Piper**

0417 018 161

**Adam Scappatura**

0413 355 481



PLANS SHOWN ONLY INDICATIVE OF LAYOUT. DIMENSIONS ARE APPROXIMATE.



82 Russell Street  
**RUSSELL LEA**

EST — 1979  
**time**